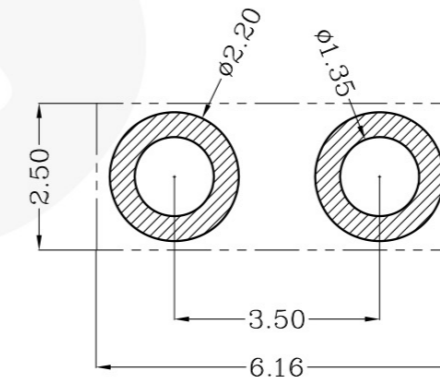
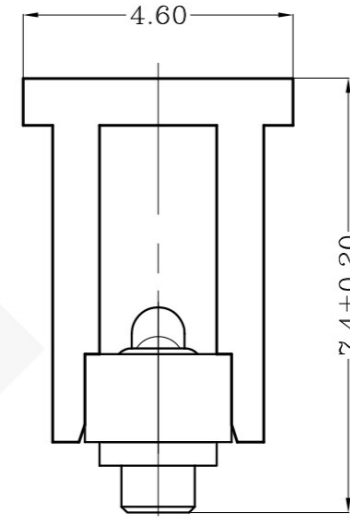
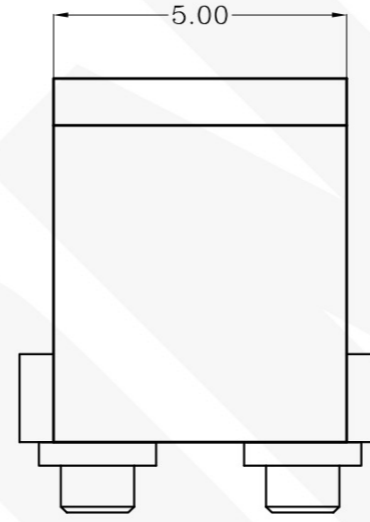
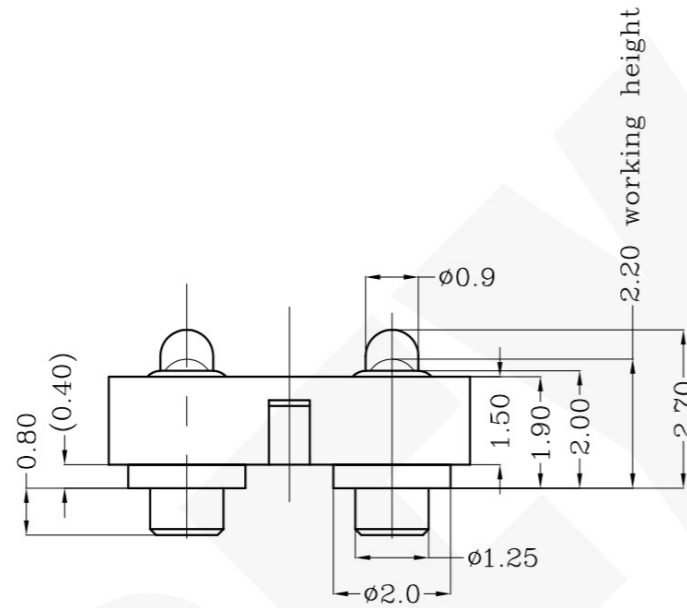
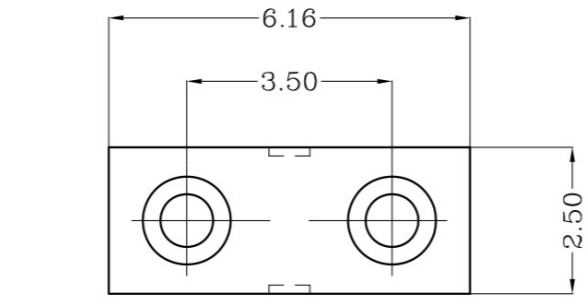


THIS INFORMATION IS CONFIDENTIAL AND IS DISCLOSED TO YOU ON CONDITION THAT NO FURTHER DISCLOSURE IS MADE BY YOU TO OTHER THAN PEXON PERSONNEL WITHOUT WRITTEN AUTHORIZATION FROM PEXON LTD.

DWG NO.
C-100293



USED ON
-



Recommended PCB Layout

Notes:
 1 Material, Housing: PA 4.6 (30% Glass Filled)
 Color Black.
 Contact: Brass
 2 Mechanical demands:
 Plating Plunger: Min 0.4um Au over 1.4um Ni
 Plating Body: Min 0.1um Au over 1.4um .
 Spring Force: 108±22 gf .

100293-2

PART NUMBER

DIMENSIONS IN MM
 TOLERANCES UNLESS
 OTHER SPECIFIED
 0 = ±-
 0.0 = ±0.15
 0.00 = ±0.10
 0.000 = ±-
 ANGLE: ±1°
 SURF TEXTURE: 3.2/
 REMOVE BURRS. BREAK
 SHARP EDGES R0.05 MAX
 DO NOT SCALE PRINT

MATL	1	HT TR	-	FIN	- ✓
DWN	Jim	APVD	Lansing	Pexon	
CHK	Andy	REL			
NAME BATTERY POGO CONNECTOR 2 POSITIONS					
PGC-1.5-2.7-R-2P-3.5PH					
SCALE	1:1	A4	DWG NO.	C-100293	SHEET 1 OF 1
					REV B

LOC	-
DIST	-

	变更高度		09'/02/04
	NEW		08'/03/19
LTR	REVISION RECORD	APVD	DATE

4

3

2

1

D

C

B

A



PEXON

E-mail: sale@pinconnector.com

WhatsApp: +86-13361867201

www.pinconnector.com