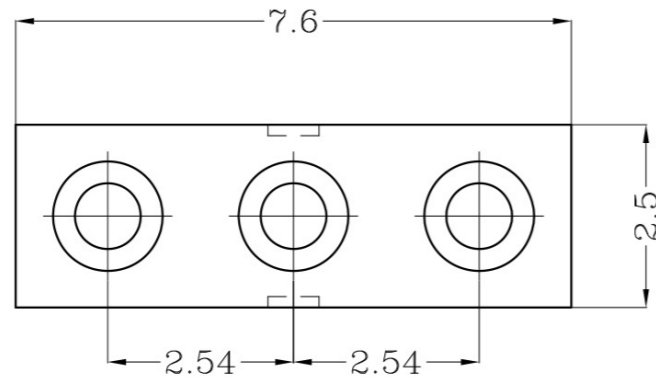
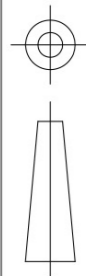


USED ON  
—

DWG NO.  
C-110866



Notes:

1 Material, Housing: PA 4.6 (30% Glass Filled)  
Color Black.

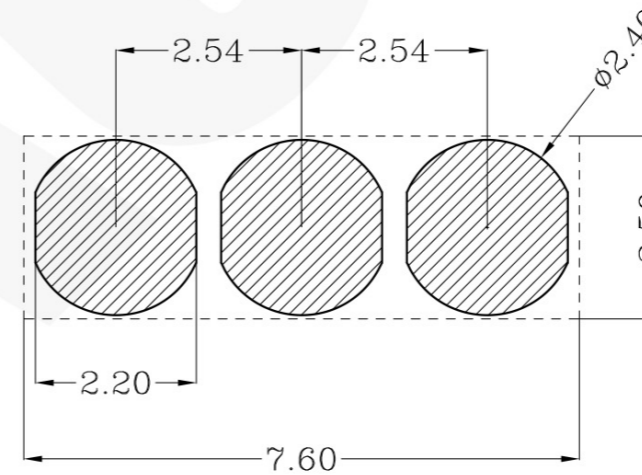
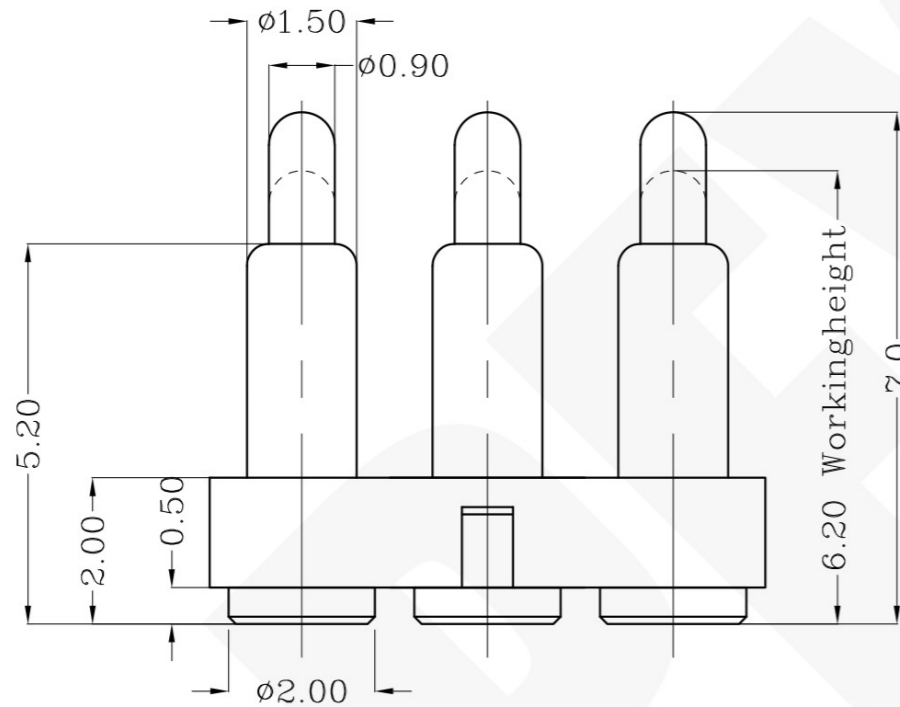
Contact: Brass

2 Mechanical demands:

Plating Plunger: 0.4um Au over 1.4um Ni  
Plating Body: 0.1um Au over 1.4um Ni.

3 Force:

Release to 6.2mm length and measure force: 90gf Min



Recommended PCB Layout

THIS INFORMATION IS CONFIDENTIAL AND IS DISCLOSED TO YOU ON CONDITION THAT NO FURTHER DISCLOSURE IS MADE BY YOU TO OTHER THAN PEXON PERSONNEL WITHOUT WRITTEN AUTHORIZATION FROM PEXON LTD.

LDC  
-  
DIST  
-

	NEW		2009/10/23
LTR	REVISION RECORD	APVD	DATE

DIMENSIONS IN MM  
TOLERANCES UNLESS  
OTHER SPECIFIED  
0 = ±  
0.0 = ±0.15  
0.00 = ±0.10  
0.000 = ±  
ANGLE: ±1°  
SURF TEXTURE: 3.2/  
REMOVE BURRS. BREAK  
SHARP EDGES R0.05 MAX  
DO NOT SCALE PRINT

MATL	△ 1	HT TR	—	FIN	— ✓
DWN	Qin	APVD		<b>Pexon</b>	
CHK		REL			
NAME	PGO GO CONNECTOR 3 POSITIONS PGC-1.5-7.0-R-3P-2.54PH				
SCALE	1:1	A4	DWG NO.	C-110866	SHEET 1 OF 1
					REV 1

110866-3

PART NUMBER

4

3

2

1

D

C

B

A



**PEXON**

E-mail: [sale@pinconnector.com](mailto:sale@pinconnector.com)

WhatsApp: +86-13361867201

[www.pinconnector.com](http://www.pinconnector.com)