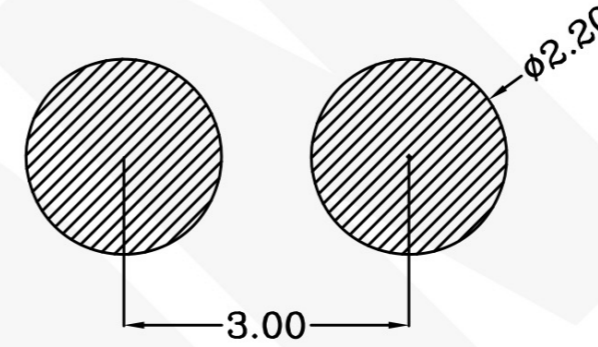
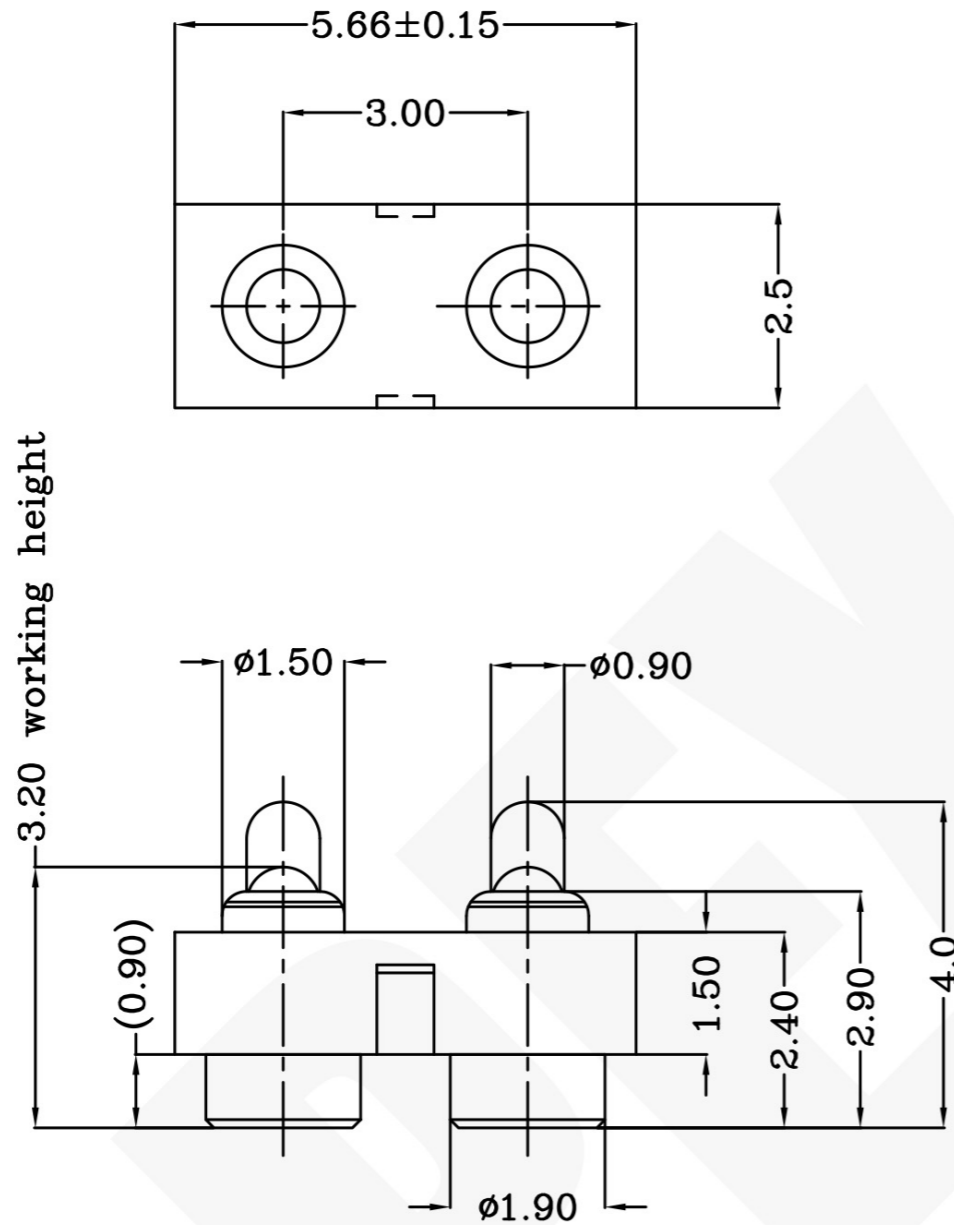


THIS INFORMATION IS CONFIDENTIAL AND IS DISCLOSED TO YOU ON CONDITION THAT NO FURTHER DISCLOSURE IS MADE BY YOU TO OTHER THAN PEXON PERSONNEL WITHOUT WRITTEN AUTHORIZATION FROM PEXON LTD.

DWG NO. C-110403



USED ON -



Recommended PCB Layout

Notes:

- 1 Material, Housing: PA 4.6 (30% Glass Filled)
Color Black.
Contact: Brass
- 2 Mechanical demands:
Plating Plunger: 0.4Um Au over 1.4um Ni
Plating Body: 0.1Um Au over 1.4um Ni.
- 3 Mechanical
 - 1)Force: 120±30gf per pin at 0.8mm
 - 2)Total stroke : 1.0mm
 - 3)Durability: 10,000 cycle min.
- 4 Electrical
 - 1)Contact resistance: 30mOhm Max.
 - 2)Operating voltage: 36VDC Max.

110403-2

PART NUMBER

DIMENSIONS IN MM TOLERANCES UNLESS OTHER SPECIFIED		MATL	HT TR	FIN
0 = ±-		1	-	- ✓
0.0 = ±0.15		DWN	APVD	Pexon
0.00 = ±0.10		QIn	Lansing	
0.000 = ±		CHK	REL	
ANGLE: ±1°		JIm		
SURF TEXTURE: 3.2/		NAME BATTERY POGO CONNECTOR 2 POSITIONS PGC-1.5-4.0-R-2P-3.0PH		
REMOVE BURRS. BREAK SHARP EDGES R0.05 MAX DO NOT SCALE PRINT		SCALE	DWG NO.	SHEET
		1:1	A4 C-110403	1 OF 1
				REV A

LTR	NEW	APVD	DATE
	REVISION RECORD		2008/10/08

LDC	-
DIST	-

4

3

2

1

D

C

B

A



PEXON

E-mail: sale@pinconnector.com

WhatsApp: +86-13361867201

www.pinconnector.com