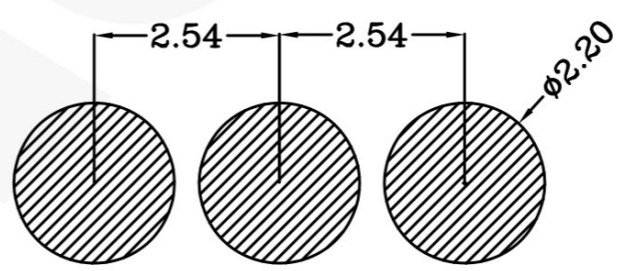
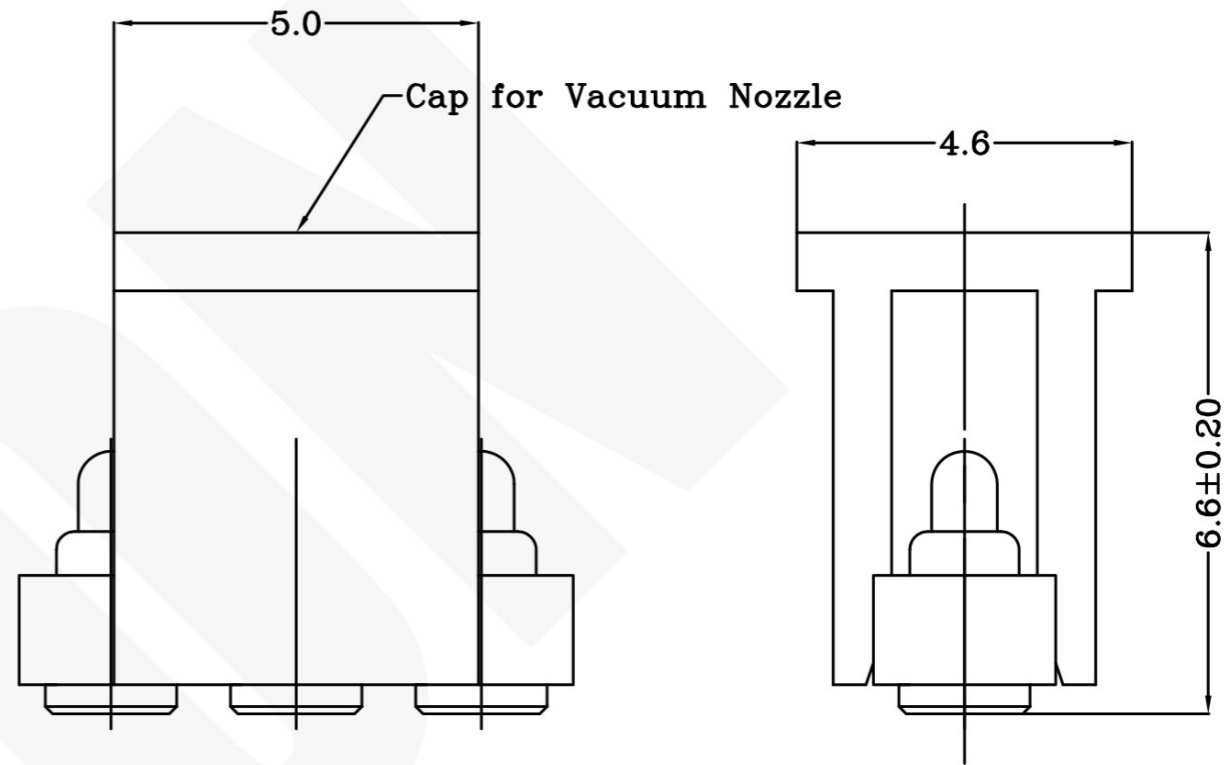
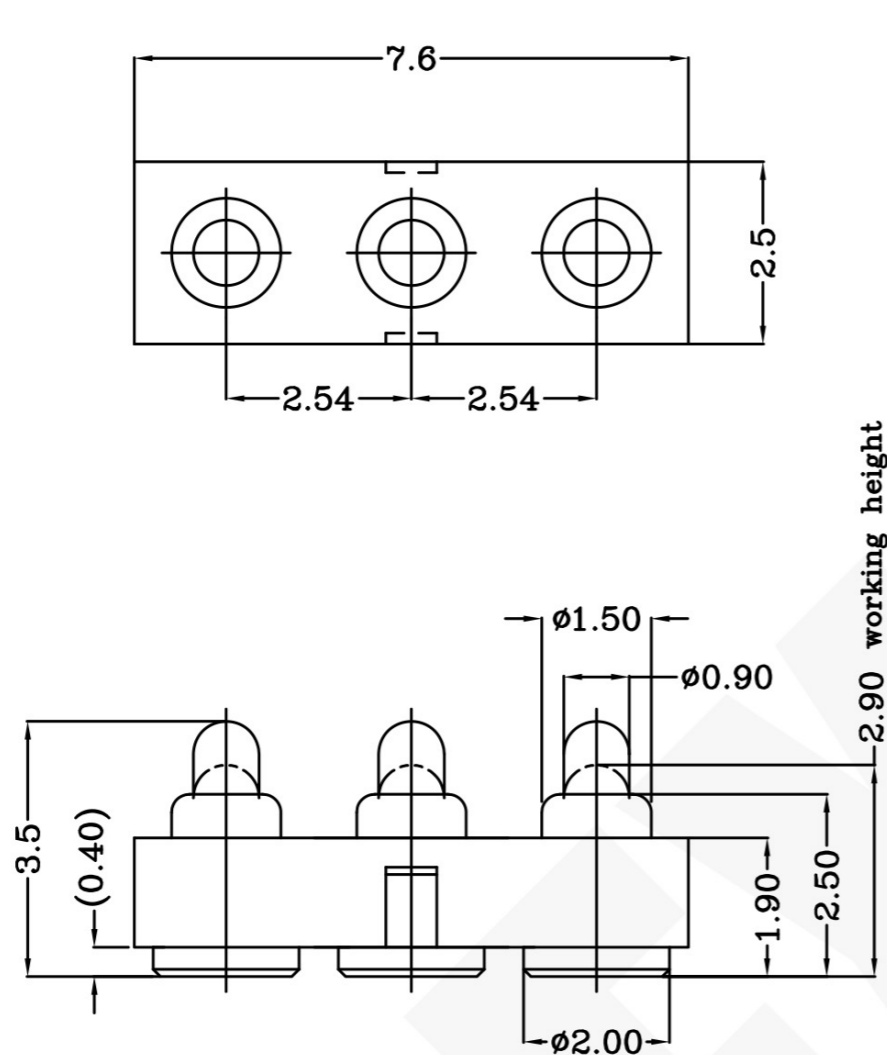


THIS INFORMATION IS CONFIDENTIAL AND IS DISCLOSED TO YOU ON CONDITION THAT NO FURTHER DISCLOSURE IS MADE BY YOU TO OTHER THAN PEXON PERSONNEL WITHOUT WRITTEN AUTHORIZATION FROM PEXON LTD.

DWG NO. C-100282



USED ON —



- Notes:
- Material, Housing: PA 4.6 (30% Glass Filled)  
Color Black.  
Contact: Brass
  - Mechanical demands:  
Plating Plunger: 0.4um Au over 1.4um Ni  
Plating Body: 0.1um Au over 1.4um Ni.
  - Mechanical
    - Total stroke : 0.8mm
    - Force: 100±30gf at 0.6mm stroke.

Recommended Solder paste thickness is 0.10 mm  
Recommended PCB Layout

100282-3  
PART NUMBER

DIMENSIONS IN MM TOLERANCES UNLESS OTHER SPECIFIED		MATL	HT TR	FIN
0 = ±-	0.0 = ±0.15	1	—	— ✓
0.00 = ±0.10	0.000 = ±	DWN Benny	APVD Lansing	<b>Pexon</b>
ANGLE: ±1°	SURF TEXTURE: 3.2/	CHK Andy	REL	
REMOVE BURRS . BREAK SHARP EDGES R0.05 MAX DO NOT SCALE PRINT	NAME	BATTERY POGO CONNECTOR 3 POSITIONS PGC-1.5-3.5-R-3P-2.54PH		
	SCALE	DWG NO.	SHEET	REV
	1:1 A4	C-100282	1 OF 1	A.1

LOC	-	Update	2013/05/09
DIST	-	NEW	2008/01/15
		LTR	REVISION RECORD
		APVD	DATE



**PEXON**

E-mail: [sale@pinconnector.com](mailto:sale@pinconnector.com)

WhatsApp: +86-13361867201

[www.pinconnector.com](http://www.pinconnector.com)