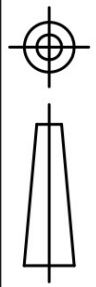


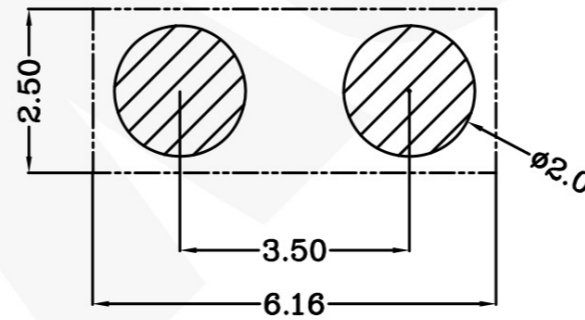
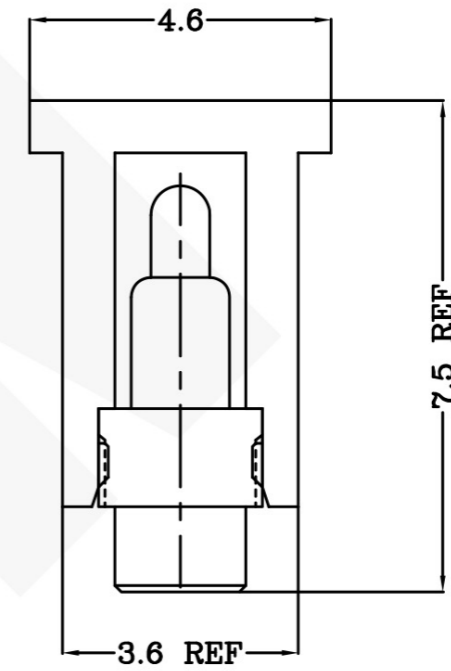
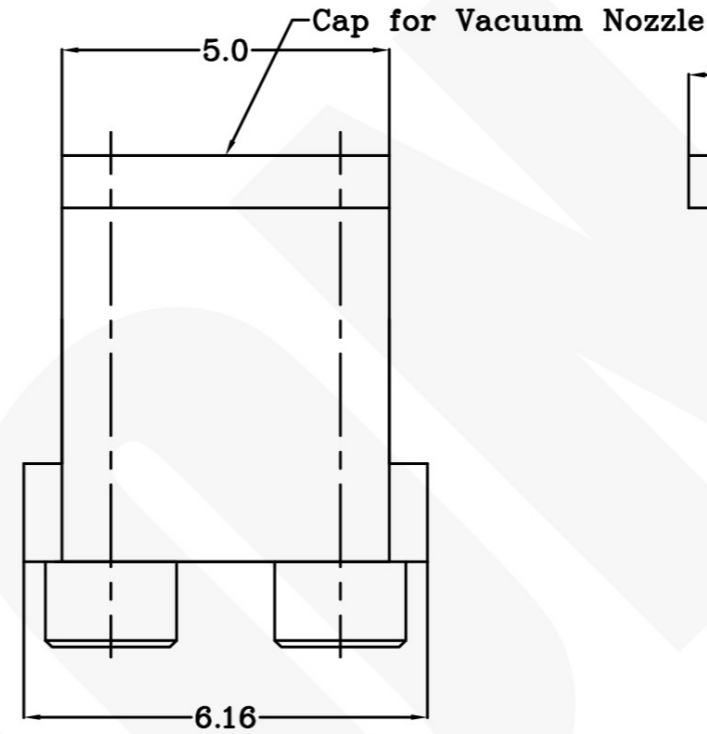
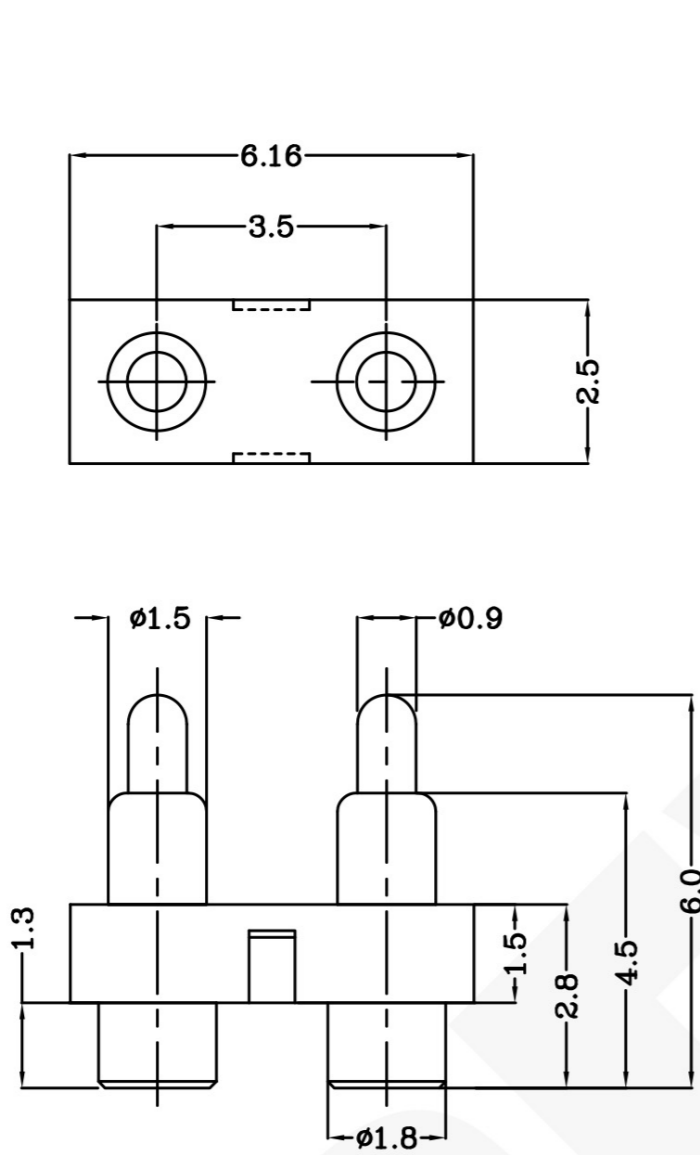
THIS INFORMATION IS CONFIDENTIAL AND IS DISCLOSED TO YOU ON CONDITION THAT NO FURTHER DISCLOSURE IS MADE BY YOU TO OTHER THAN PEXON PERSONNEL WITHOUT WRITTEN AUTHORIZATION FROM PEXON LTD.

DWG NO.

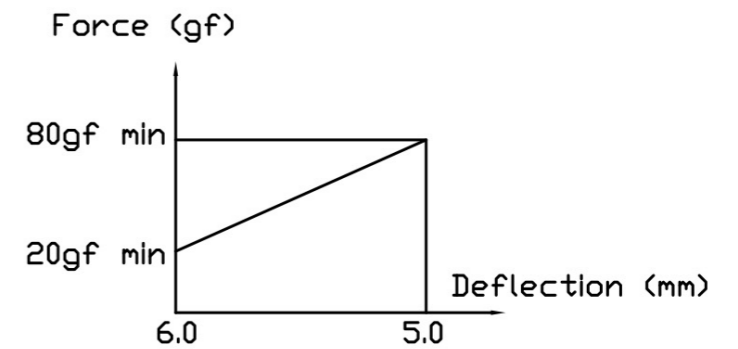
C-100305



USED ON



Recommended PCB Layout



Notes:

1 Material, Housing: PA 4.6 (30% Glass Filled)
Color Black.

Contact: Brass

2 Mechanical demands:

Plating Plunger: plating Au over plating Ni
Plating Body: plating Au over plating Ni.

100305-2

PART NUMBER

DIMENSIONS IN MM
TOLERANCES UNLESS
OTHER SPECIFIED
0 = ±
0.0 = ±0.15
0.00 = ±0.10
0.000 = ±
ANGLE: ±1°
SURF TEXTURE: 3.2/
REMOVE BURRS. BREAK
SHARP EDGES R0.05 MAX
DO NOT SCALE PRINT

MATL	1	HT TR	-	FIN	- ✓
DWN	Qin	APVD	Lansing	Pexon	
CHK	Andy	REL			
NAME POGO PIN CONNECTOR PGC-1.5-6.0-R-2P-3.5PH					
SCALE	1:1	A4	DWG NO.	C-100305	SHEET 1 OF 1
					REV A

LOC	-
DIST	-

LTR	NEW	APVD	DATE
	REVISION RECORD		08/03/27

4

3

2

1

D

C

B

A



PEXON

E-mail: sale@pinconnector.com

WhatsApp: +86-13361867201

www.pinconnector.com