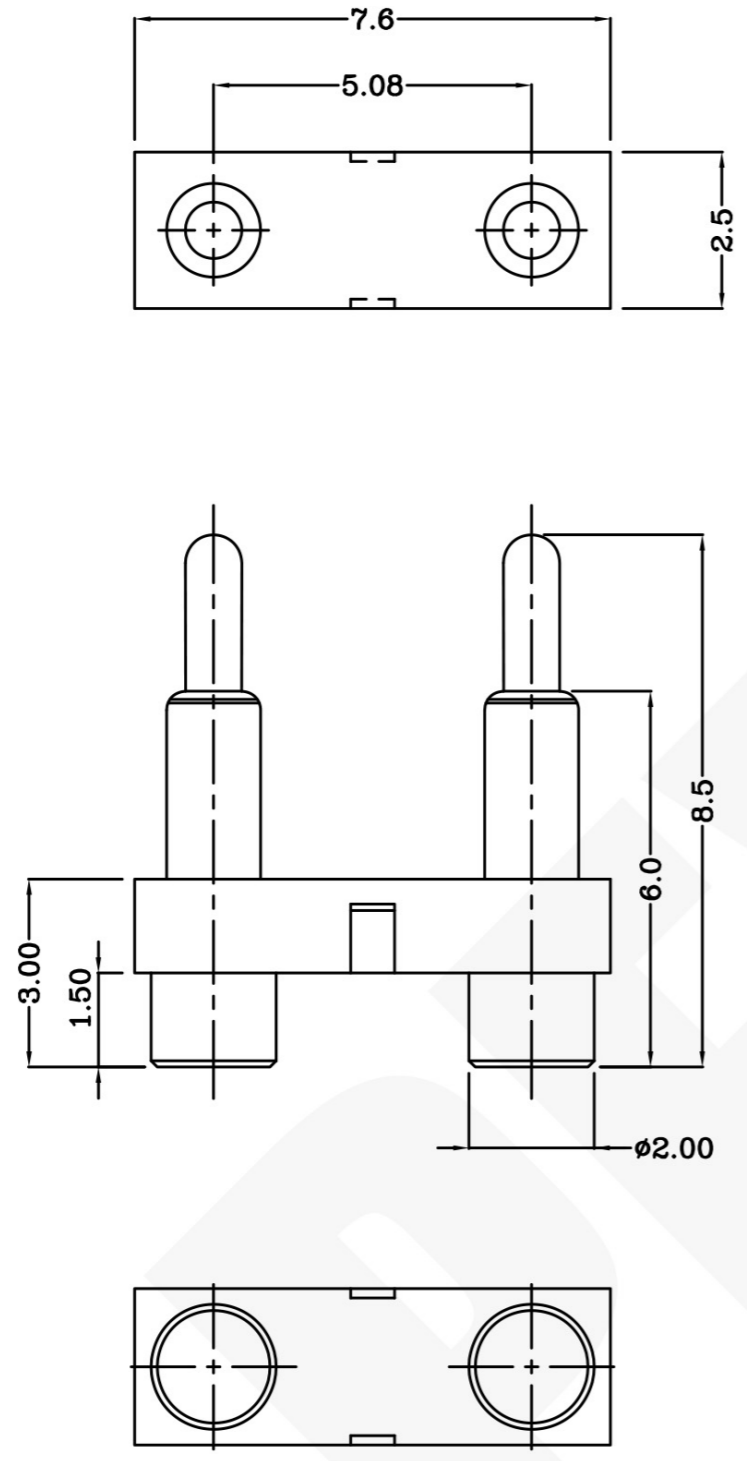


THIS INFORMATION IS CONFIDENTIAL AND IS DISCLOSED TO YOU ON CONDITION THAT NO FURTHER DISCLOSURE IS MADE BY YOU TO OTHER THAN PEXON PERSONNEL WITHOUT WRITTEN AUTHORIZATION FROM PEXON LTD.

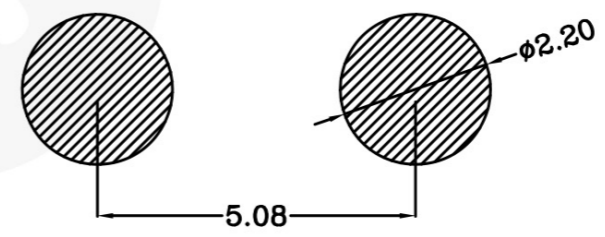
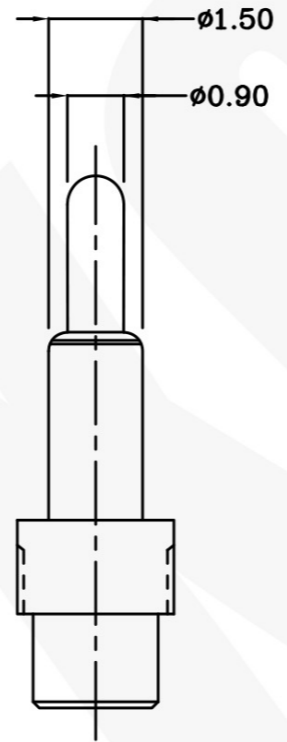
DWG NO.  
C-100271



USED ON  
-



Notes:  
 1 Material, Housing: PA 4.6 (30% Glass Filled)  
     Color Black. (UL94V-0)  
     Contact: Brass  
 2 Mechanical demands:  
     Plating plunger: 0.4um Au over 1.4um Ni  
     Plating body: 0.1um Au over 1.4um Ni .  
     Force is 125±30gf at 1.0 mm stroke.



Recommended PCB Layout  
 Recommended solder paste thickness is 0.10 mm

DIMENSIONS IN MM  
 TOLERANCES UNLESS  
 OTHER SPECIFIED  
 0 = ±-  
 0.0 = ±0.15  
 0.00 = ±0.10  
 0.000 = ±  
 ANGLE: ±1°  
 SURF TEXTURE: 3.2/  
 REMOVE BURRS. BREAK  
 SHARP EDGES R0.05 MAX  
 DO NOT SCALE PRINT

MATL		HT TR	FIN
DWN	Qln	APVD	Lansing
CHK	Jlm	REL	
NAME BATTERY CONNECTOR 2 POS. PGC-1.5-8.5-R-2P-5.08PH			
SCALE	A4	DWG NO.	C-100271
1:1		SHEET	1 OF 1
		REV	A

LDC  
-  
DIST  
-

	NEW		2008/01/05
LTR	REVISION RECORD	APVD	DATE

100271-2  
 PART NUMBER

**Pexon**

4

3

2

1



**PEXON**

E-mail: [sale@pinconnector.com](mailto:sale@pinconnector.com)

WhatsApp: +86-13361867201

[www.pinconnector.com](http://www.pinconnector.com)