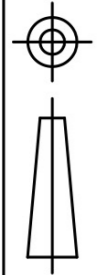
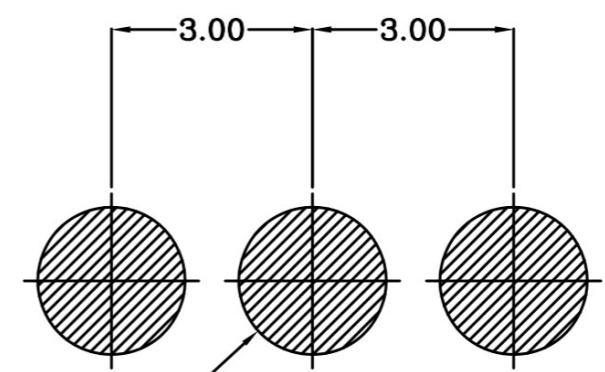
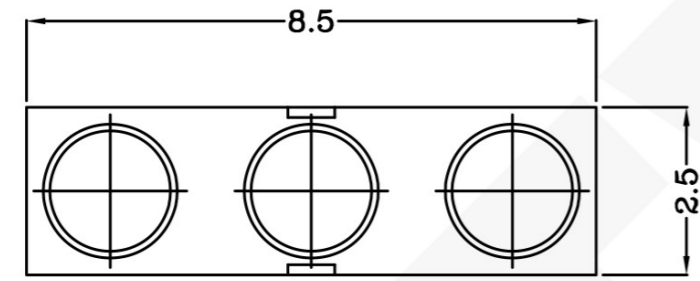
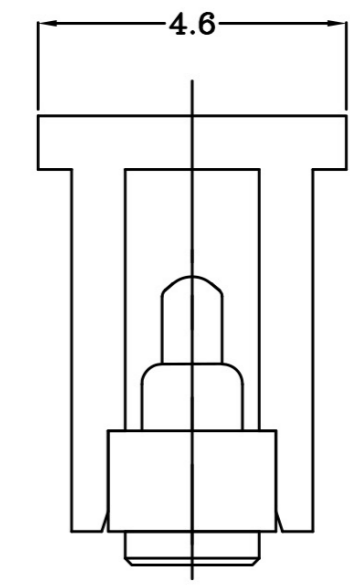
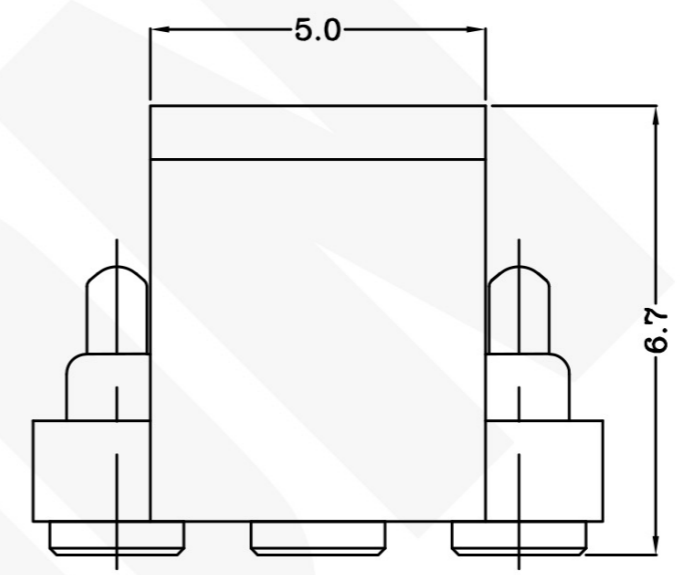
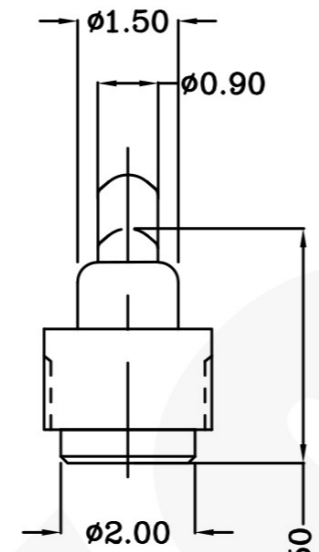
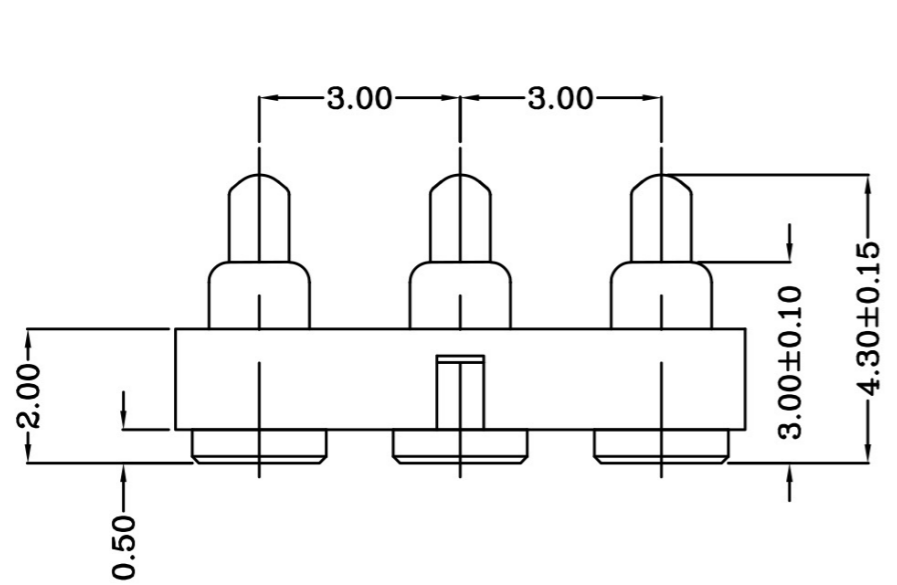


THIS INFORMATION IS CONFIDENTIAL AND IS DISCLOSED TO YOU ON CONDITION THAT NO FURTHER DISCLOSURE IS MADE BY YOU TO OTHER THAN PEXON PERSONNEL WITHOUT WRITTEN AUTHORIZATION FROM PEXON LTD.

DWG NO.
C-100110



USED ON
-



- Notes:
- Material, Housing: PA 4.6 (30% Glass Filled)
Color Black.
Contact: Brass
Spring: SUS304
 - Mechanical demands:
Plating Plunger: Min 0.4um Au over 1.4um Ni
Plating Body: Min 0.1um Au over 1.4um .
 - Mechanical
 - Total stroke : 1.0mm
 - Durability: 10,000 cycle min.
 - Electrical
 - Contact resistance: 30mOhm Max.
 - Operating voltage: 36VDC
 - Spring force: 120±25gf at 0.8mm stroke

100110-3

PART NUMBER

DIMENSIONS IN MM TOLERANCES UNLESS OTHER SPECIFIED		MATL	HT TR	FIN
0	= ±-	1	-	- ✓
0.0	= ±0.15	DWN Benny	APVD Lansing	Pexon
0.00	= ±0.10	CHK Andy	REL	
0.000	= ±	NAME PGD 3P PGC-1.5-4.3-R-3P-3.0PH		
ANGLE: ±1°		SCALE 1:1	DWG NO. C-100110	SHEET 1 OF 1
SURF TEXTURE: 3.2/		A4		REV A
REMOVE BURRS. BREAK SHARP EDGES R0.05 MAX DO NOT SCALE PRINT				

LDC	-
DIST	-

	NEW		2008/08/14
LTR	REVISION RECORD	APVD	DATE

4

3

2

1

D
C
B
A



PEXON

E-mail: sale@pinconnector.com

WhatsApp: +86-13361867201

www.pinconnector.com