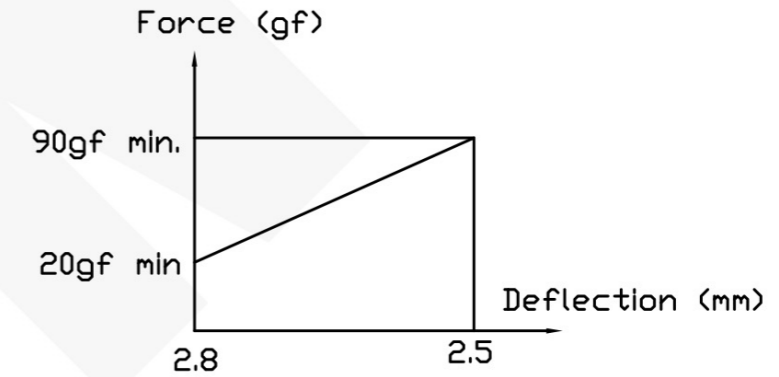
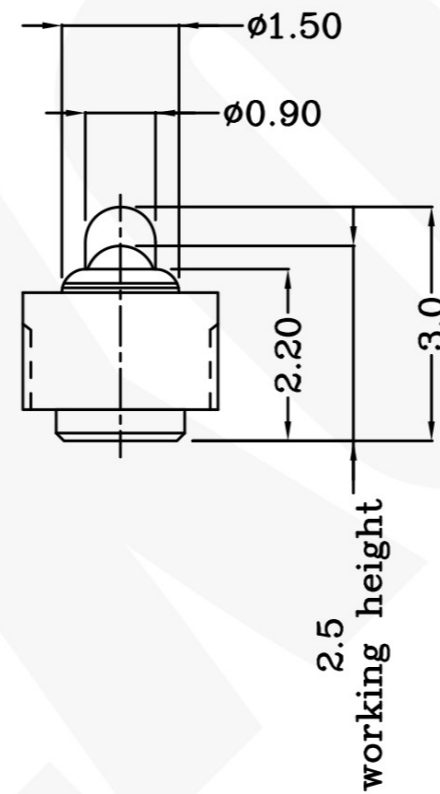
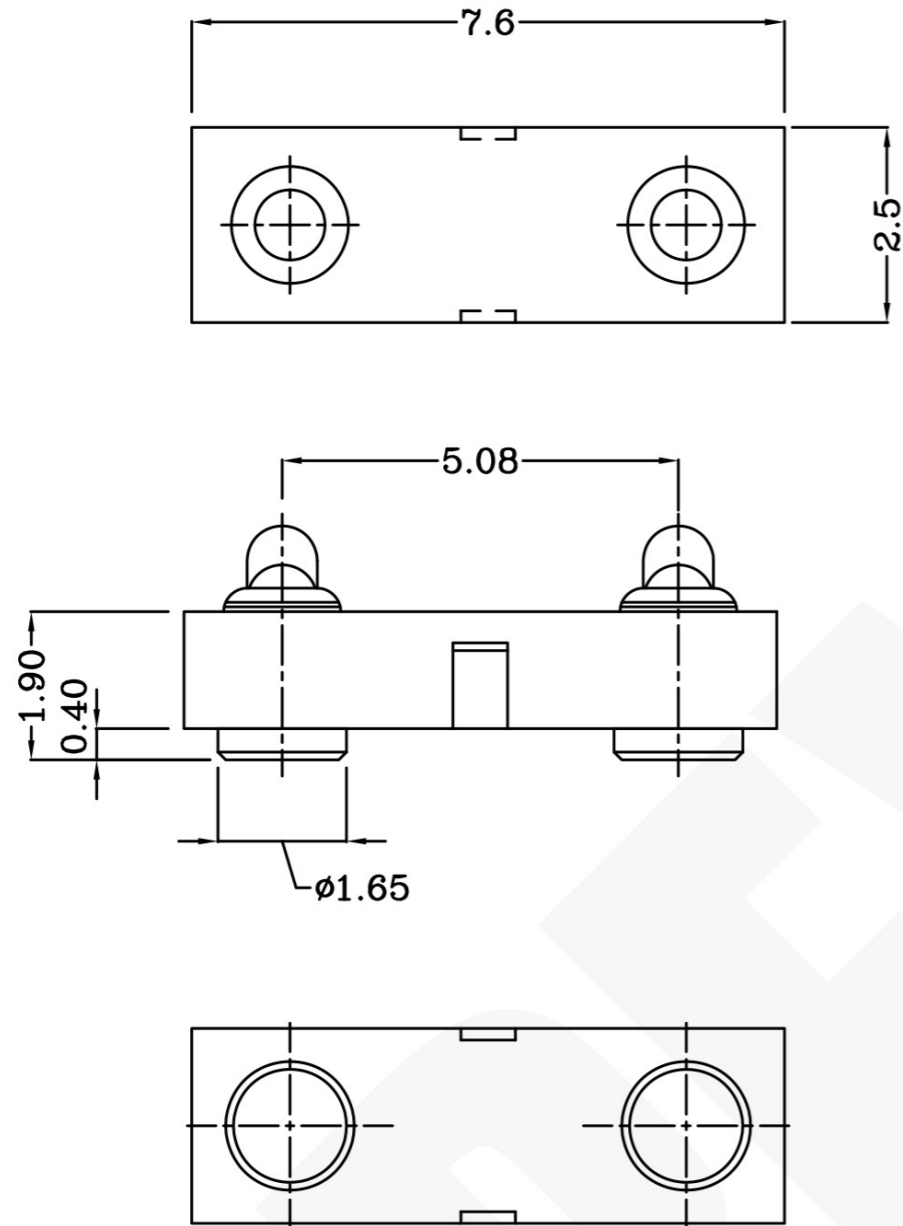


USED ON

DWG NO.
C-100106



THIS INFORMATION IS CONFIDENTIAL AND IS DISCLOSED TO YOU ON CONDITION THAT NO FURTHER DISCLOSURE IS MADE BY YOU TO OTHER THAN PEXON PERSONNEL WITHOUT WRITTEN AUTHORIZATION FROM PEXON LTD.



- Notes:
- Material, Housing: PA 4.6 (30% Glass Filled)
Color Black. (UL94V-0)
Contact: Brass
 - Mechanical demands:
Plating plunger: 0.4um Au over 1.4um Ni
Plating body: 0.1um Au over 1.4um Ni

LDC
-
DIST
-

LTR	REVISION RECORD	APVD	DATE
	update remark		2007/09/07

DIMENSIONS IN MM
TOLERANCES UNLESS
OTHER SPECIFIED
0 = ±-
0.0 = ±0.15
0.00 = ±0.10
0.000 = ±
ANGLE: ±1°
SURF TEXTURE: 3.2/
REMOVE BURRS, BREAK
SHARP EDGES R0.05 MAX
DO NOT SCALE PRINT

MATL	HT TR	FIN
DWN Benny	APVD	
CHK	REL	
NAME BATTERY CONNECTOR 2 POS. PGC-1.5-3.0-R-2P-5.08PH		
SCALE 1:1	A4	DWG NO. C-100106
	SHEET 1 OF 1	REV C

100106-2
PART NUMBER

Pexon

4

3

2

1

D
C
B
A



PEXON

E-mail: sale@pinconnector.com

WhatsApp: +86-13361867201

www.pinconnector.com