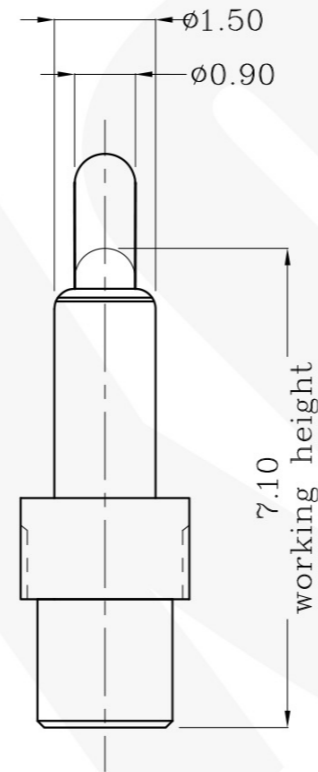
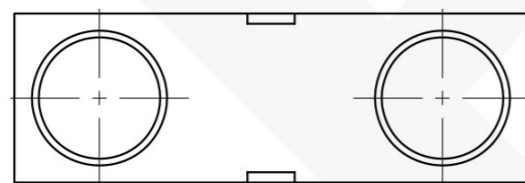
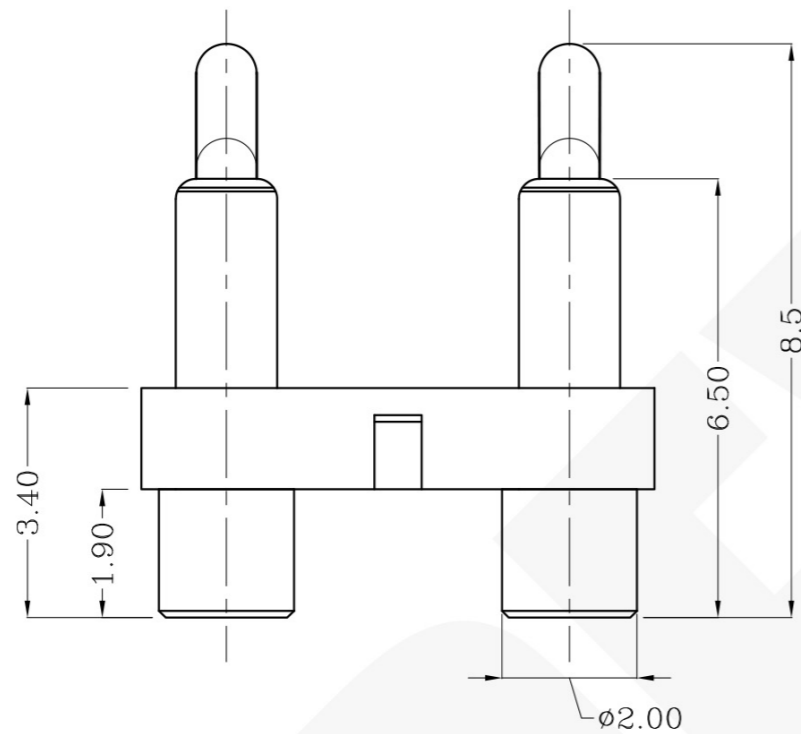
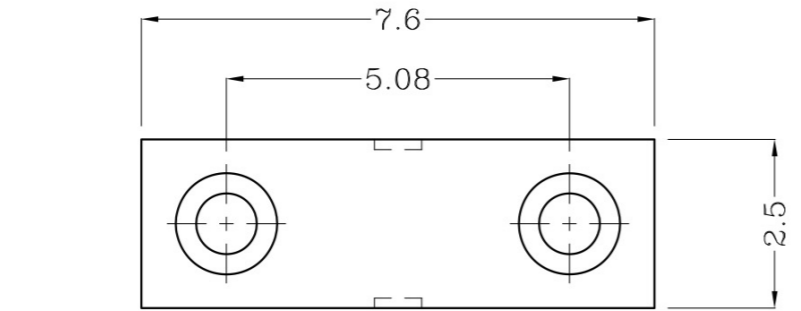


THIS INFORMATION IS CONFIDENTIAL AND IS DISCLOSED TO YOU ON CONDITION THAT NO FURTHER DISCLOSURE IS MADE BY YOU TO OTHER THAN PEXON PERSONNEL WITHOUT WRITTEN AUTHORIZATION FROM PEXON LTD.

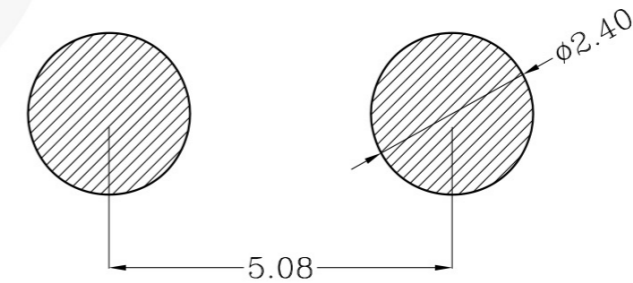
DWG NO.  
C-100177



USED ON  
-



Notes:  
 1 Material, Housing: PA 4.6 (30% Glass Filled)  
     Color Black. (UL94V-0)  
     Contact: Brass  
 2 Mechanical demands:  
     Plating plunger: 0.40Um Au over 1.4um Ni  
     Plating body: 0.10Um Au over 1.4um Ni  
     Force is 115±35 gf at least at working height.



Recommended PCB Layout  
 Recommended solder paste thickness is 0.10 mm

LOC	-
DIST	-

LTR	Add WH	APVD	DATE
			2009/09/09

DIMENSIONS IN MM  
 TOLERANCES UNLESS  
 OTHER SPECIFIED  
 0 = ±-  
 0.0 = ±0.15  
 0.00 = ±0.10  
 0.000 = ±  
 ANGLE: ±1°  
 SURF TEXTURE: 3.2/  
 REMOVE BURRS. BREAK  
 SHARP EDGES R0.05 MAX  
 DO NOT SCALE PRINT

MATL	HT TR	FIN
	-	- ✓
DWN Qin	APVD Lansing	Pexon
CHK Jim	REL	
NAME BATTERY CONNECTOR 2 POS. PGC-1.5-8.5-R-2P-5.08PH		
SCALE 1:1	A4	DWG NO. C-100177
	SHEET 1 OF 1	REV B

100177-2  
 PART NUMBER

4

3

2

1

D

C

B

A



**PEXON**

E-mail: [sale@pinconnector.com](mailto:sale@pinconnector.com)

WhatsApp: +86-13361867201

[www.pinconnector.com](http://www.pinconnector.com)